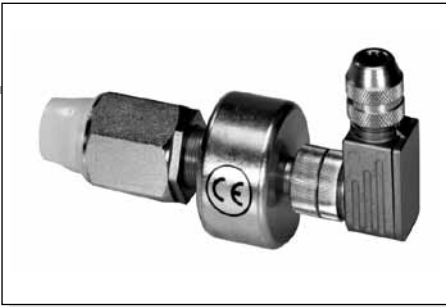


# PROXIMITY SENSOR TYPE L.V.D.T.



1

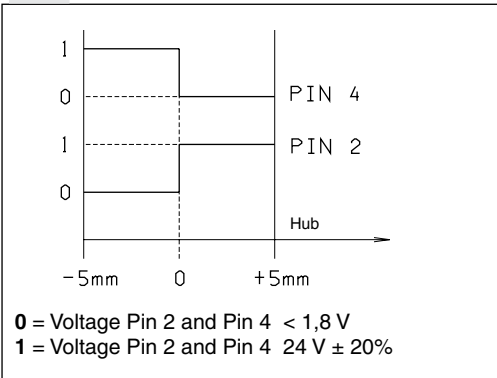


Supply voltage	24 V ± 20%
Polarity reversal protection	max 300 V
Switching point hysteresis	≤ 0,06 mm
Reproducibility	± 0,02 mm
Max. output current	≤ 250 mA
Protection against short circuit	yes
Operating temperature	-25°C ÷ 85°C
Connection type	connector
Protection according to DIN	IP65
Max. pressure	315 bar

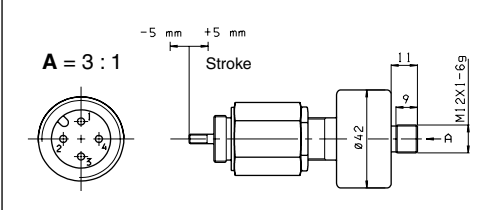
**CE certificate according to 89/336/EEC EMC is provided. A screened cable is needed.**

The LVDT position transducers allow to check exactly the very instant when the passage of a minimum flow is allowed.

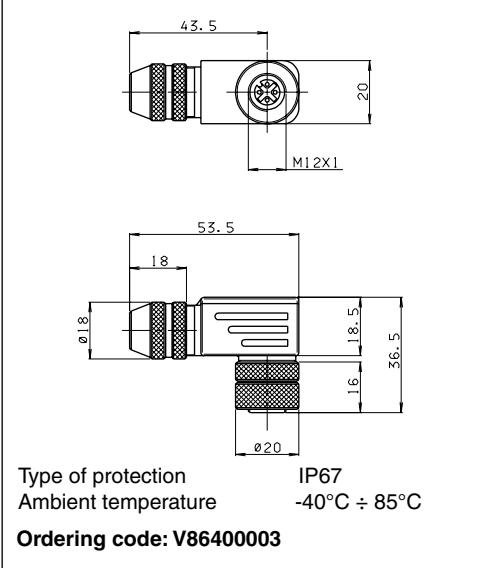
## FUNCTIONAL DIAGRAM ON PIN 2 AND 4



## OVERALL DIMENSION LVDT

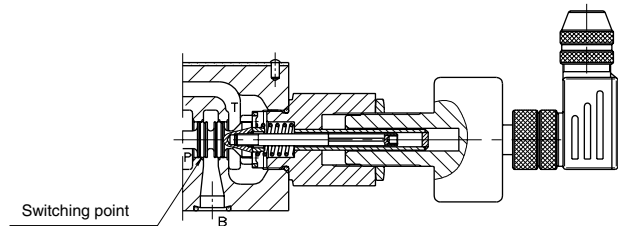
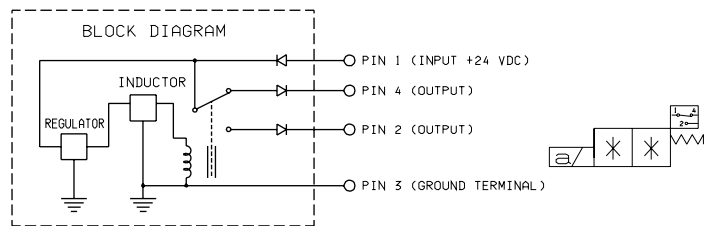


## OVERALL DIMENSIONS CONNECTOR

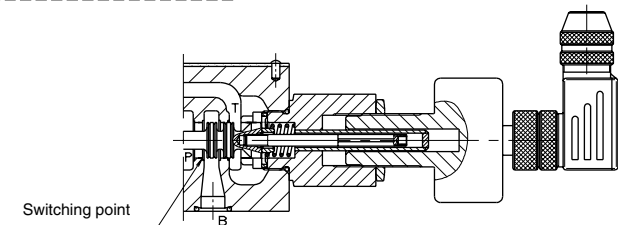
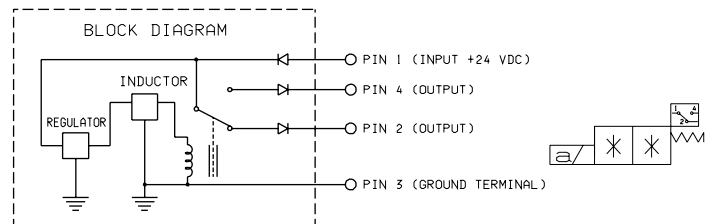


## ELECTRICAL CONNECTIONS LVDT

**A** With this connection, on the Pin 4 an output signal is active when no oil is crossing the valve (from P → B).



**B** With this connection, on the Pin 4 there is no output signal when oil is crossing the valve (from P → B).



**NB:** connecting the output to Pin 4 or Pin 2 the type of contact, normally closed or open, can be chosen.